

Case Study

BESPOKE OFFICE ENTRANCE, TALL CURVED SLIDING DOOR MODEL BSDR 282, 12 ARTHUR STREET, LONDON, UK

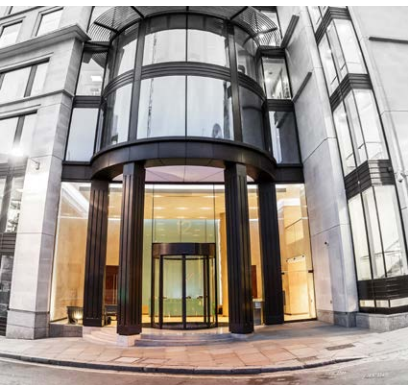
12 Arthur Street is a fine example of how a 'state-of-the-art' commercial office building can be designed to top international specifications whilst making a positive contextual contribution to the urban fabric of London City. The entrance of 12 Arthur Street had a long history of unreliable suppliers and its entrance doors were constantly breaking down, cold and draughty.

Bauporte had been asked to develop a bi parting dual door system which would be firstly reliable and essentially draught free. Along with this challenge, the new owner Prudential had the wish to make the entrance larger with what they called a "Grand opening", allowing visitors to walk side by side. With this challenge Bauporte developed a unique air curtain system within this door incorporating air curtains inside the door and an air circulation unit in front of the inner opening.

Bauporte installed this system into another uniquely designed Bronze clad Tall curved 360 sliding doors model BSDR 282.

With Bauporte's maintenance programme in place the entrance will continue to function effortlessly long into the future.

This unique PLC controlled system regulates the door entrance heater controls and can be overridden by remote control.



Summary

Project:	12 Arthur Street
Client:	Prudential Ltd
Location:	12 Arthur Street, London, UK
Architect:	HKR Architects
Contractor:	Mmoser Associates
Product:	Bespoke office entrance Tall curved sliding door model BSDR 282

www.bauporte.com

1 Waverley Lane, GU9 8BB Farnham, Surrey, UK
T +44 (0)203 41 15 023, F +44 (0)203 41 15 365, sales@bauporte.com

Zandsteen 14, 2132 MR Hoofddorp, The Netherlands
T +31 (0)23 55 75 924, F +31 (0)23 55 75 923, sales@bauporte.com

Making an entrance